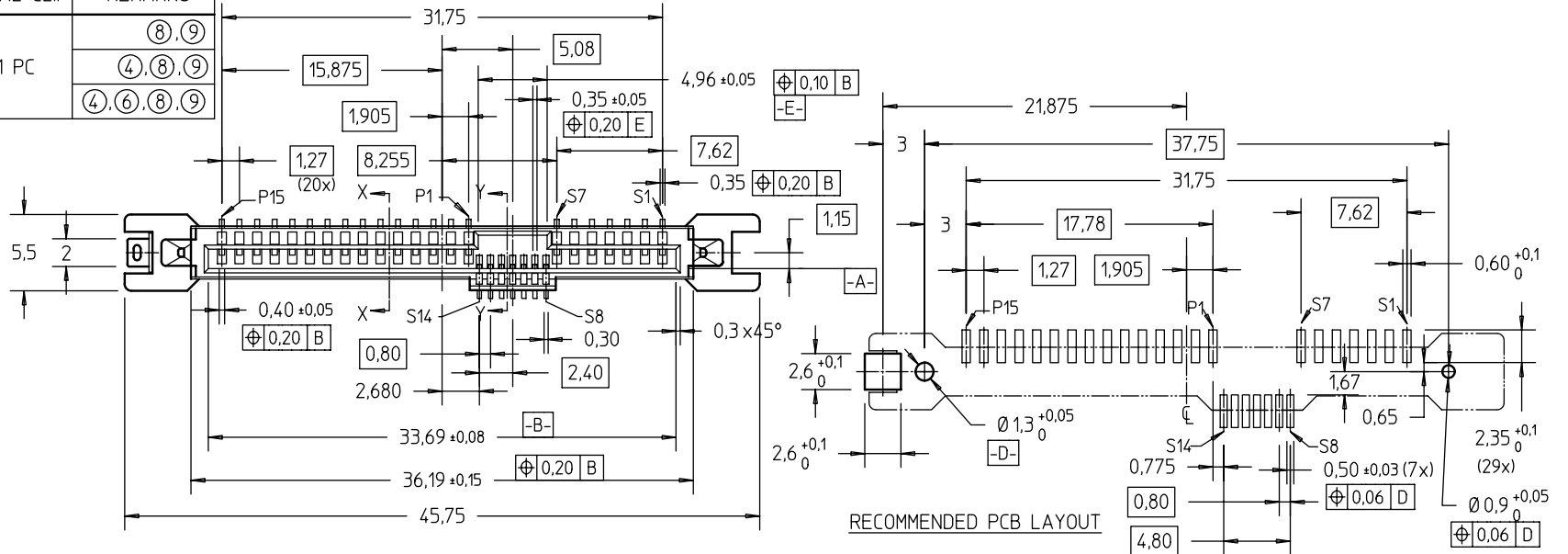


FCI CONFIDENTIAL

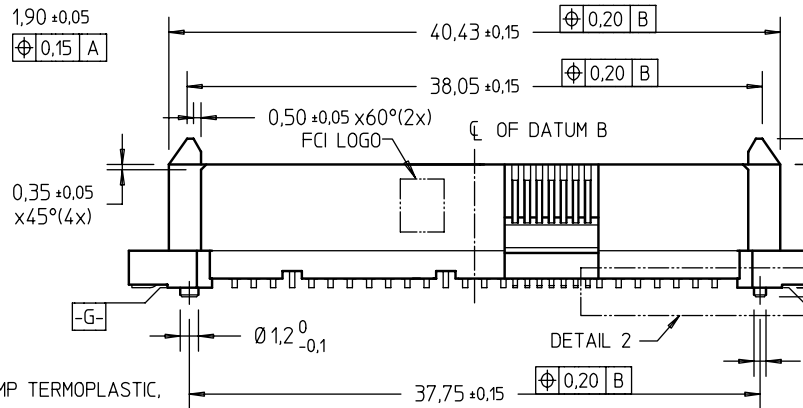
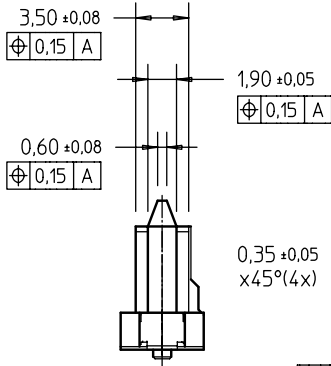


This document is the property of and embodies CONFIDENTIAL and PROPRIETARY information of FCI. No part of the information shown on this document may be used in any way or disclosed to others without the written consent of FCI. Copyright FCI.

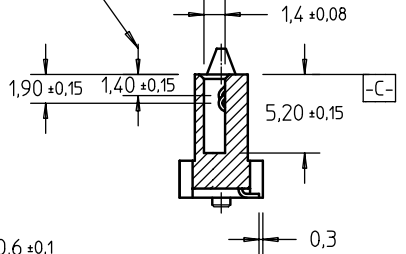
PRODUCT NO	METAL CLIP	REMARKS
10036355-001LF	1 PC	⑧,⑨
10036355-001CLF		④,⑧,⑨
10036355-001C-TRLF		④,⑥,⑧,⑨



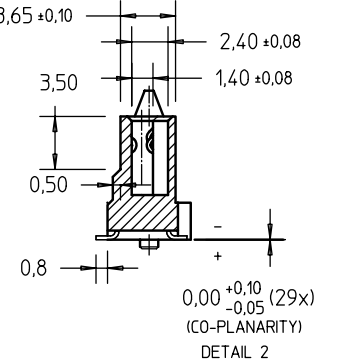
RECOMMENDED PCB LAYOUT



P4 & P12 GROUNDS ONLY



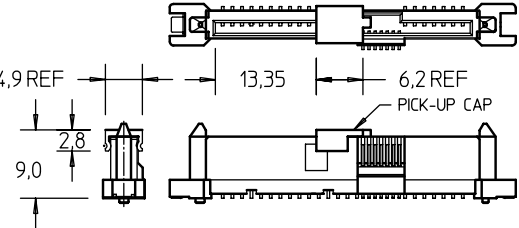
SECT X-X



SECT Y-Y

NOTES:

- MATERIAL:
 - HOUSING : HIGH TEMP TERMOPLASTIC, UL 94V-0, BLACK COLOR
 - TERMINAL : COPPER ALLOY
 - HOLD DOWN : COPPER ALLOY
- FINISH :
 - TERMINAL : 30u" Au PLATING (CONTACT POINT) OVER 50u" NICKEL
 - SOLDER TAIL : 100u" min Sn OVER 50u" NICKEL
 - HOLD DOWN : 100u" min Sn OVER 50u" NICKEL
- PER SFF REV 11
- PART WITH PICK-UP CAP, P/N XXXXXXXX-XXXX_LF
- THE STD PACKAGING IS IN TRAY
- FOR TAPE & REEL PACKAGING, SUFFIX *-TR* ADDED, P/N XXXXXXXX-XXXX-TR_LF



PART WITH PICK-UP CAP, SEE NOTE ④

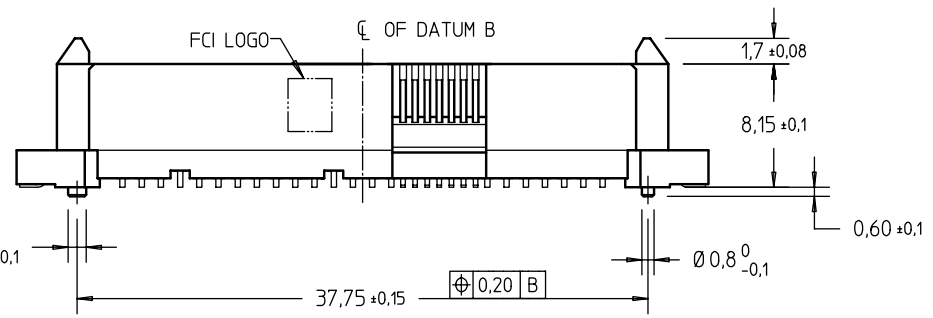
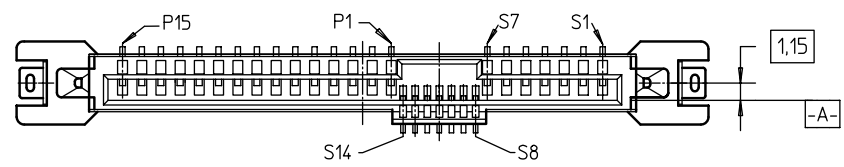
mat'l code		surface	tolerance	projection	product family
ltr	ecn no	ISO 1302	ISO 406 ISO 1101	ISO 1302	SAS
A	S04-0077	GLL	2004-04-20	mm	title
B	S04-0190	GLL	2004-09-09	mm	SAS RECEPTACLE
C	S04-0226	GLL	2004-10-26	mm	VERTICAL SMT TYPE ASSY
D	S05-0026	GLL	2005-02-14	mm	scale 2 : 1
E	S05-0292	GLL	2005-10-12	mm	dwg no
F	S06-0281	GLL	2006-08-28	mm	10036355
sheet index		revision sheet	F 1	F 2	sheet 1 of 2
					size A4
					type CUSTOMER Drawing

FCI CONFIDENTIAL



This document is the property of and embodies CONFIDENTIAL and PROPRIETARY information of FCI. No part of the information shown on this document may be used in any way or disclosed to others without the written consent of FCI. Copyright FCI.

PRODUCT NO	METAL CLIP	REMARKS
10036355-002LF	2 PCS	⑧,⑨
10036355-002CLF		④,⑧,⑨
10036355-002C-TRLF		④,⑥,⑧,⑨

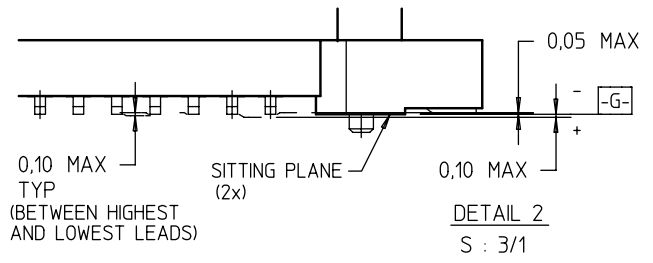
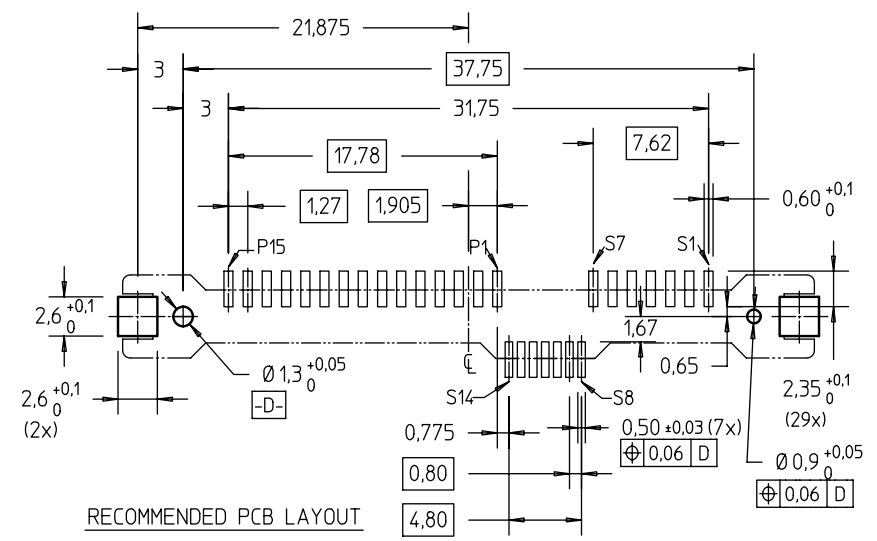
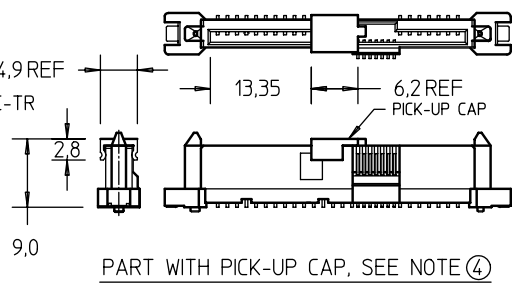


NOTES:
ALL OTHER DIMENSIONS, REFER TO SHEET 1.

- NOTES: (cont'd)
- 7 THE HOUSING WILL WITHSTAND EXPOSURE TO 260°C PEAK TEMPERATURE FOR 10 SECONDS IN A CONVECTION, INFRA-RED OR VAPOR PHASE REFLOW OVEN.
 - ⑧ THIS PRODUCT MEETS EUROPEAN UNION DIRECTIVES AND OTHER COUNTRY REGULATIONS AS DESCRIBED IN GS-22-008.
 - ⑨ PART NUMBERS ENDING IN "LF" MEANS FOR NOTE 8 LEAD FREE IDENTIFICATION.

THE EQUIVALENT P/N FOR "LF" DESIGNATION :

- (i) XXXXXXXX-XXXLF IS SAME AS XXXXXXXX-XXX
- (ii) XXXXXXXX-XXXCLF IS SAME AS XXXXXXXX-XXXC 4,9 REF
- (iii) XXXXXXXX-XXXC-TRLF IS SAME AS XXXXXXXX-XXXC-TR



mat'l code		surface	tolerance	projection	product family
ltr		ISO 1302	ISO 406 ISO 1101		SAS
ecn no		tolerances unless otherwise specified			title
dr		angles	linear	mm	SAS RECEPTACLE
date		± 2°	= ±0,20	scale 2 : 1	VERTICAL SMT TYPE ASSY
dr		GL L00	2004-04-20		dwg no
enrg		GL L00	2004-04-20		sheet 2 of 2
chr		GL L00	2006-08-28		size
appd		JOEY NG	2006-08-28		A4
sheet index		revision sheet	1	type	CUSTOMER Drawing